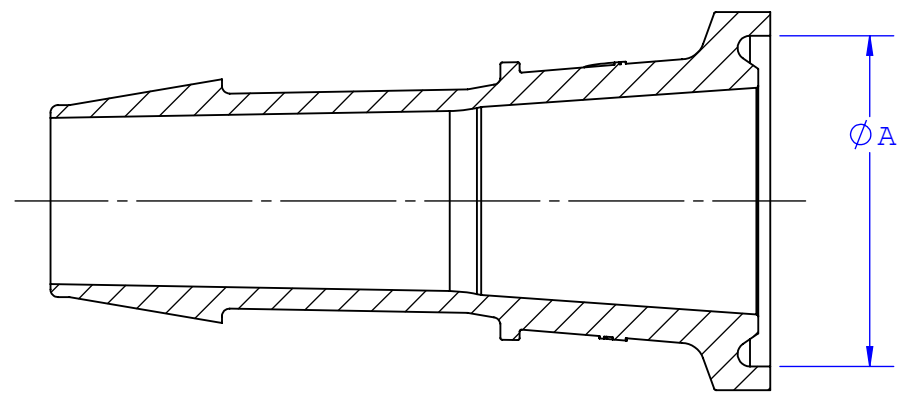
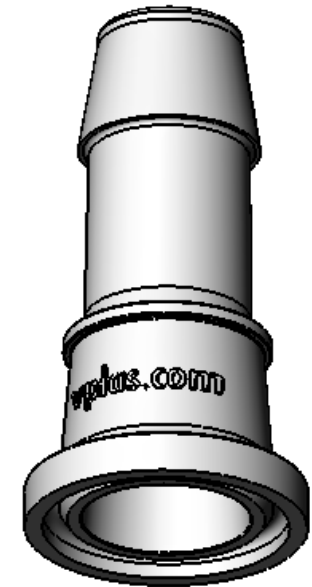


- NOTES: 1. FOR ADDITIONAL DETAILS, PLEASE CONTACT VP PRODUCT DEVELOPMENT  
 2. DIMENSIONS MARKED  $\square$  ARE CONTROL DIMENSIONS  
 3. ALL EXTERIOR SURFACES HAVE A 20 Ra MICRINCH SURFACE FINISH OR BETTER  
 4. ALL INTERIOR SURFACES HAVE A 15 Ra MICRINCH SURFACE FINISH OR BETTER

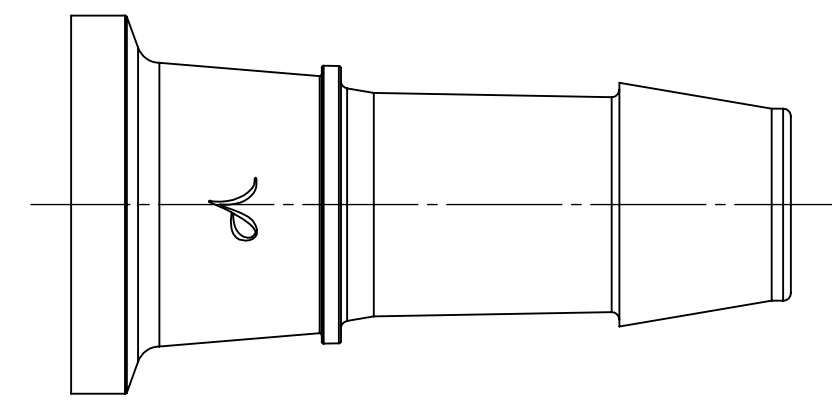
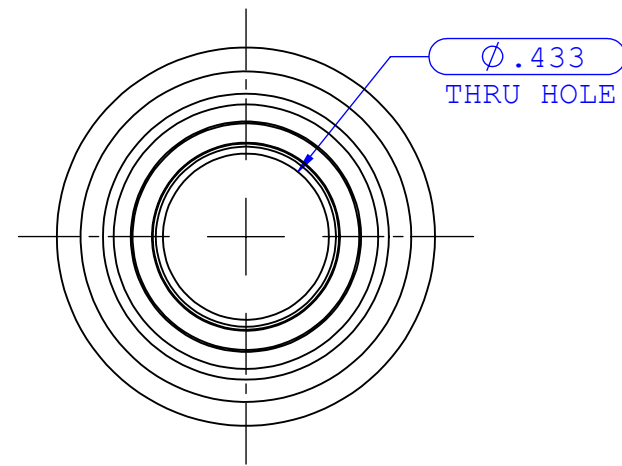
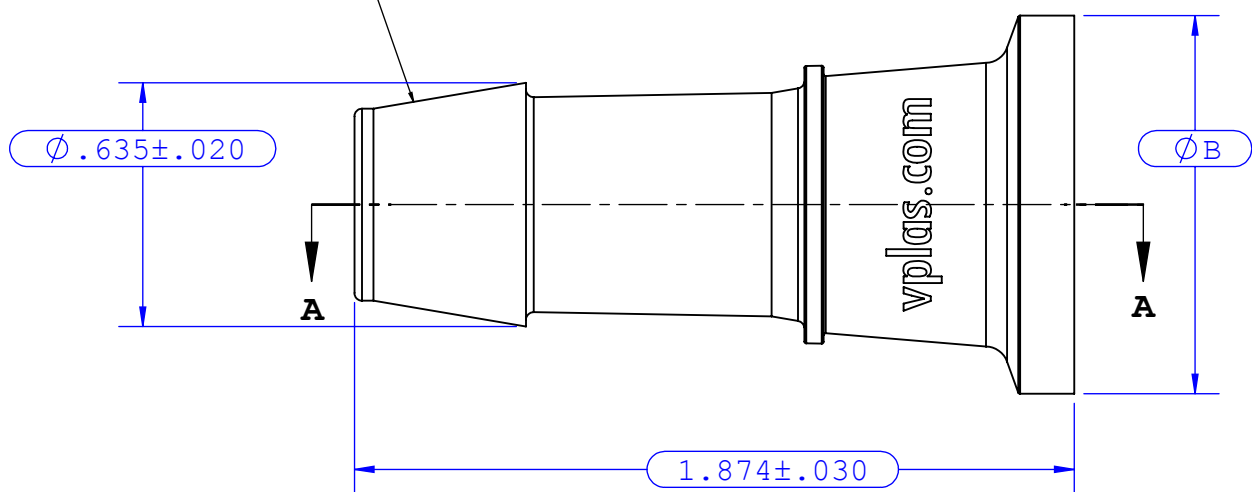
REVISIONS			
REV.	DESCRIPTION	DATE	APPROVED
A	INITIAL RELEASE	3-15-08	S.N.R.
B	MODIFIED TOLERANCES ON SEVERAL DIMENSIONS	6-26-08	S.N.R.
C	ADDED MATERIAL SPECIFIC DIMENSIONS	12-04-08	S.N.R.



SECTION A-A



INSTRUMENT QUALITY PART. NO PARTING LINE PERMITTED ON THIS CONICAL SURFACE.



Dimension	Material Specific Tolerances							
	Acetal	Nylon	PP	ABS	PC	PVC	Polysulfone	PVDF
A			0.859±0.008					0.859±0.012
B			0.985±0.008					0.985±0.012
C								
D								
E								
F								

UNLESS OTHERWISE SPECIFIED DIMENSIONS ARE IN INCHES TOLERANCES ARE: <small>FRACTIONS    DECIMAL    ANGULAR        ±            .XX ±.01    ± 1°                      .XXX ±.005                      .XXXX ±.001</small> DO NOT SCALE DRAWING		<b>VALUE PLASTICS, INC</b>			
DRAWN BY: petel		DATE: 12/4/2008		PART NUMBER: SFMN680	
NEW PRODUCT DEVELOPMENT MGR: R. Narayanan		SIZE: <b>B</b>	SCALE: NTS	VER: 1010494	DWG. NO. 1010494
				DESCRIPTION: Sanitary Fitting, Mini 1" Flange to 600 Series Barb, 1/2" (12.7 mm) Tubing ID	
				REV C	
				SHEET: 1 OF 1	
© 2008 VALUE PLASTICS, INC					

**FOR REFERENCE ONLY**